



**Health Sciences Division
Medical Imaging Programs**

Magnetic Resonance Imaging

Dear Prospective Student:

Thank you for your interest in the Gulf Coast State College Magnetic Resonance Imaging (MRI) program. The medical imaging faculty and staff are very proud of the exceptional program we offer and would like to provide assistance to you as you prepare for your academic career.

This e-Learning program is an Advanced Technical Certificate curriculum offered to candidates currently certified by the American Registry of Radiologic Technologists (ARRT) in the fields of Radiography, Sonography, Radiation Therapy, or in Nuclear Medicine Technology certified by Nuclear Medicine Technology Certification Board (NMTCB), and to graduate Radiography students who are eligible for certification. Graduate students must pass the ARRT within four weeks of beginning the Certificate program.

The program provides Distance Education courses and clinical rotations. The clinical portion of the program consists of orientation to the clinical aspects of MRI, demonstration of the use of the equipment, and an opportunity to participate under close supervision in actual MRI procedures. Following successful completion of the program courses and clinical practice, the candidate may be eligible to apply for certification in Magnetic Resonance Imaging offered by the American Registry of Radiologic Technologists.

Please read and review carefully the enclosed information packet, as it will assist you in the application process. If you have any questions or need assistance, please contact the Medical Imaging Coordinator below to schedule an advising appointment.

We wish you much success as you begin to prepare for your future in the profession of medical imaging. Good luck with your educational plans.

Sincerely,

DeeAnn VanDerSchaaf, RT (R), MS
Coordinator, Medical Imaging Programs
850.913.3318
dvanderschaaf@gulfcoast.edu

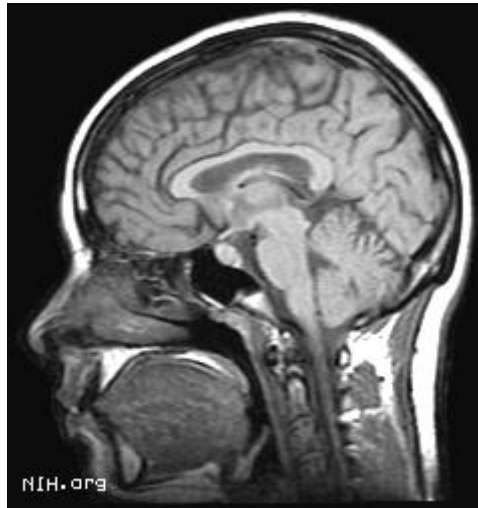
DV/pw
encl.
rev. 7/11

Gulf Coast State College Medical Imaging Program

Advanced Technical Certificate Program Application Packet

for

Magnetic Resonance Imaging



DeeAnn VanDerSchaaf, RT(R), MS
Coordinator, Medical Imaging Program
(850) 913-3318
dvanderschaaf@gulfcoast.edu

MRI Program

Admission Checklist

It is the applicants' responsibility to make sure their application folder is complete prior to the start of class.

1. New students should apply for General Admission to GCSC and pay \$20 application fee online, at the Bookstore, or at the Business Office (in person or by phone). Applications are available at the Admissions Office and online at www.gulfcoast.edu . Failure to pay the application fee at the time of submission can result in your ineligibility for program consideration.

2. Complete and submit the MRI Application including the Technical Standards Form to the Administrative Offices of Health Sciences Division.

3. Submit proof of licensure (plus State licensure, if applicable).

4. Provide High School and all College transcripts. Applicant must request *official* transcripts from high school or GED (scores required) and all colleges attended be sent to the GCSC Admissions Office. Transcripts must be received by the Admissions Office prior to the start of class.

Note: If you are enrolled in classes at another institution that will not be completed prior to the start of class, and you want these uncompleted classes to be considered in selection, you must submit documentation of enrollment to the Health Sciences Division.

5. Copy of current valid CPR certification. Acceptable cards are American Heart Association Healthcare

Clinical Practices and Policies

1. Attendance at clinical practice is mandatory.
2. Students who do not demonstrate safe clinical or professional practice are subject to review by the faculty and may be subject to immediate dismissal.
3. Safe clinical and professional practice is defined as:
 - a. Performing clinical duties consistent with the professional Code of Ethics established by each imaging specialty.
 - b. Receiving passing grades and/or reviews on performance ratings as evaluated by the Clinical Coordinator and/or Clinical Affiliate Supervisor.
4. Students are required to be current in CPR certification, AIDS certification, and OSHA and remain current throughout the duration of their program.
5. Students are required to be current with their immunizations and remain current throughout the duration of their program.
6. Students must abide by HIPAA regulations.

Clinical Affiliate Sites

As a Gulf Coast State College Magnetic Resonance Imaging student, you will have firsthand experience with the latest imaging technologies and participate in clinical rotations at various affiliate hospitals, clinics and private offices.

Gulf Coast State College has established agreements with a variety of clinical education sites within the Panama City, and other areas to maximize student exposure to multiple settings and to provide experience in applying diagnostic imaging techniques.

Students outside these areas need to contact a clinical facility. Students are responsible for providing their own transportation to the clinical facilities.

Magnetic Resonance Imaging Curriculum

Advanced Technical Certificate

This Advanced Technical Certificate (ATC) curriculum is offered to imaging professionals licensed by the American Registry of Radiologic Technologists (ARRT), Nuclear Medicine Technology Certification Board, and American Registry of Diagnostic Medical Sonography (ARDMS).

This course work is offered for individuals who desire to become proficient in the advanced modality of Magnetic Resonance Imaging (MRI) and in preparation for the advanced registry offered by the ARRT in MRI.

An Advanced Technical Certificate in Magnetic Resonance Imaging is awarded to the student who holds a two-year degree from an accredited college or university and completes a minimum of 18 credit hours of the coursework below. These courses are currently offered as Distance Education courses only. Courses are offered every eight weeks. College credit will be awarded.

RTE 2575	Introduction to MRI	3
RTE 2760	MRI Sectional Anatomy/Pathology I	3
RTE 2577L	Clinical MRI Education I	3
RTE 2576	MRI Physics	3
RTE 2771	MRI Sectional Anatomy/Pathology I	3
RTE 2578L	Clinical MRI Education II	3
Total credit hours:		18

Note: Students must obtain a grade of “C” or better in each course in order to progress in the program.

Completion Requirements

Successfully complete all of the courses in the program.

An 8-hour per week clinical rotation is required. The student will be responsible for obtaining a clinical site(s) located in their area for their rotation, at which time temporary privileges can be issued until appropriate documentation is received.

If the site you identify has an existing contract with the Gulf Coast State College's MRI Program, coordination will likely be easy. Students are encouraged to first consider these sites, because they have demonstrated suitability for meeting students' experiential objectives and are frequently receptive to student visitations.

However, you are not limited to those sites. If you prefer another site, the faculty will attempt to establish a new contract. Keep in mind that development of a new practicum site requires significant evaluation and administrative preparation.

Students requesting a non-established site should seek early advisement from the Gulf Coast State College's Medical Imaging Program Coordinator.

Magnetic Resonance Imaging

A Magnetic Resonance Imaging (MRI) Technologist is typically employed in a hospital or clinic to provide direct patient care for patients and must be able to apply verified knowledge and skillfully perform MRI procedures.

Clinical assignments for the MRI Program require certain physical demands that are the technical standards for admission. These standards are based upon the minimum tasks performed by graduates of the program as recommended by the American Society of Radiologic Technologists. Listed below are the Technical Standards that all applicants must meet in order to participate and complete the MRI Program:

1. Sufficient visual acuity to accurately administer contrast agents and to monitor imaging equipment as well as provide the necessary patient assessment and care.
2. Sufficient auditory perception to receive verbal communication from patients and members of the healthcare team and to assess the health needs of people through the use of monitoring devices such as intercom systems , cardiac monitors, respiratory monitors and fire alarms.
3. Sufficient gross and fine motor coordination to respond promptly and to implement skills related to the performance of MRI, such as positioning, transporting, and imaging patients. MRI technologists must be able to manipulate equipment such as the scan console, power injectors, and various RF receiver coils. In addition, MRI technologists must perform venipuncture on a regular basis.
4. Sufficient communication skills (verbal, reading, writing) to interact with individuals and to communicate their needs promptly and effectively, as may be necessary in the patient's or client's interest.
5. Sufficient intellectual and emotional function to plan and implement patient care.

Examples of specific technical standards the MRI student must be able to meet are:

- Lift, transfer and/or move patients from wheelchair/stretcher to scan table. Dock/release and wheel scan table to/from scan room to patient waiting area.
- Lift, move, reach, or push MRI equipment (lift MRI coils of up to 25 lbs., push/wheel docking table with patient to/from scan room).
- Manual dexterity and ability to bend/stretch.
- Distinguish colors and shades of gray. Demonstrate effective interpersonal relation skills, including patient instruction.
- Read and extract information from the medical chart or patient requisitions.
- Explain the clinical study verbally and/or in writing.

To perform/assist with MRI procedures on patients, students must initially undergo the same screening procedures as patients in order to enter the scan room. The MRI scan room contains a region of intense magnetic field. Contraindications for entering the MRI scan room include:

- Certain biomedical implants, materials, and devices (e.g., aneurysm clips, brain clips).
- Certain electrically, magnetically, and mechanically activated implants and devices (e.g., cardiac pacemakers, cochlear implants).
- Certain metallic foreign objects (e.g., shrapnel, bullets, metal in eyes).

Applicant's Signature

Date

Clinical Site Request

If you have specific preferences for your clinical sites (need to stay within a geographic area, limited available dates, etc.) please indicate those on this form. The faculty will attempt to accommodate those needs, but there is no guarantee that all situations can be accommodated.

The Gulf Coast State College Medical Imaging Program Coordinator grants final approval for a site selection and may assign a student to a particular site to ensure achievement of goals and objectives.

Preferred Site #1

Clinical Facility: _____

Address _____

Contact Person _____

Contact Person's Telephone Number _____

Contact Person's E-mail _____

Preferred Site #2

Clinical Facility: _____

Address _____

Contact Person _____

Contact Person's Telephone Number _____

Contact Person's E-mail _____

Preferred Site #3

Clinical Facility: _____

Address _____

Contact Person _____

Contact Person's Telephone Number _____

Contact Person's E-mail _____