

Accountability Report Trends 2006-2010

Comparing GCSC Performance to the State Benchmarks

Office of Institutional Effectiveness
April 2011

TABLE OF CONTENTS

	Page
Introduction	1
Description of Measures	1
Definitions	2
Analysis of Each Measure	4
Conclusion	7
Appendix - Tables and Graphs	
Figure 1 – Measure 1, Part 1	8
Figure 2 – Measure 1, Part 2 AA Retention.....	9
Figure 3 – Measure 1, Part 2 AA Success	9
Figure 4 – Measure 1, Part 2 AS/AAS Retention	10
Figure 5 – Measure 1, Part 2 AS/AAS Success	10
Figure 6 – Measure 1, Part 2 PSVC Retention	11
Figure 7 – Measure 1, Part 2 PSVC Success	11
Figure 8 – Measure 2 Mean GPA	12
Figure 9 – Measure 2 GPA At or Above 2.5	12
Figure 10 – Measure 3, Part 2 Placement Rates for Completers	13
Figure 11 – Measure 3, Part 2 Placement Rates for Leavers	13
Figure 12 – Measure 4, Part 1 Failed Entry-Level Test	14
Figure 13 – Measure 4, Part 1 Passed Highest Level College Prep Read	14
Figure 14 – Measure 4, Part 1 Passed Highest Level College Prep Writing	15
Figure 15 – Measure 4, Part 1 Passed Highest Level College Prep Math	15
Figure 16 – Measure 4, Part 2 AA College Prep Retention Rate	16
Figure 17 – Measure 4, Part 2 AA College Prep Success Rate	16
Figure 18 – Measure 4, Part 2 AS/AAS College Prep Retention Rate	17
Figure 19 – Measure 4, Part 2 AS/AAS College Prep Success Rate	17
Figure 20 – Measure 4, Part 2 PSVC College Prep Retention Rate	18
Figure 21 – Measure 4, Part 2 PSVC College Prep Success Rate	18
Figure 22 – Measure 5 Comparison of CLAST for Essay	19
Figure 23 – Measure 5 Comparison of CLAST for Math.....	19
Figure 24 – Measure 5 Comparison of CLAST for Reading	20
Figure 25 – Measure 5 Comparison of CLAST for English	20
Figure 26 – Measure 5 Comparison of CLAST for All Subtests.....	21

INTRODUCTION

The Accountability Report was enacted by the Florida Legislature in 1993 as the State of Florida moved toward measuring performance and outcomes in instructional programs. The purpose of the Accountability Report is to assess the improvement and quality of the instructional and administrative efficiency of the Florida Community College System. This report is a key element in GCCC's institutional effectiveness assessment process.

The following measures were developed by the legislature to assess accountability.

Description of Measures

1. **Measure 1 Part 1: Prior Year High School Graduates Enrollment Report** - This report shows the number and percent of high school graduates the College enrolls from the previous year in its service area.
2. **Measure 1 Part 2: Retention and Success Report for Associate in Arts (AA), Associate in Science (AS), and Postsecondary Vocational Certificate (PSVC) Students** - This report presents the retention and success rates of first-time-in-college AA and AS degree seeking students and PSVC seeking students.
3. **Measure 2: Associate in Arts Degree Transfer Performance Report** - This report indicates the performance of AA students after they have transferred to a Florida State University.
4. **Measure 3 Part 2: State Vocational Program Placement Report** - This report displays the number and percentage of students who completed and were placed into an occupation related to their instruction, and also the number and percentage of students who left and were placed into an occupation related to their instruction.
5. **Measure 4 Part 1: College Preparatory Success Rate Report** - This report presents the number and percent of first-time in-college students who failed some portions of their entrance exam, how many of those enrolled in the college preparatory classes, and the number and percent of those who passed the highest level college preparatory courses.
6. **Measure 4 Part 2: College Preparatory Retention and Success Report for Associate in Arts, Associate in Science, and Postsecondary Vocational Certificate Students** - This report shows retention and success rates of first-time in-college AA and AS degree seeking students and PSVC seeking students, who have completed all college preparatory requirements.
7. **Measure 5: CLAST Performance Report** - This reports shows the passing number and percent of students who attempted the CLAST or had a CLAST alternative for each CLAST subtest and for all subtests combined.

DEFINITIONS

Prior Year High School Graduates Enrolled the Following Year - the number and percent of previous year high school graduates that the college enrolls from its service district's high schools.

Associate in Arts Degree Transfer Performance - the performance of AA students after they have transferred to a Florida state university.

Vocational Placement Rates of Associate in Science and Certificate Program Completers and Leavers - number and percentage of students who completed and were placed into an occupation related to their instruction, and also the number and percentage of students who left and were placed into an occupation related to their instruction.

College Preparatory Enrollment, Retention and Success for Associate in Arts, Associate in Science, and Postsecondary Vocational Certificate Students -retention and success rates of first- time- in- college AA and AS degree seeking students and PSVC seeking students, who have completed all college preparatory requirements.

College Preparatory Success Rate - the number and percent of first- time- in- college students who failed some portions of their entrance exam, how many of those enrolled in the college preparatory classes, and the number and percent of those who passed the highest level college preparatory courses.

CLAST Performance - the passing number and percent of students who attempted the CLAST or had a CLAST alternative for each CLAST subtest and for all subtests combined.

Source: Cohort population includes first-time-in-college (FTIC) students from the beginning of the tracking period who took an entry level test, achieved 18 credit hours (AA and A.S) or 9 credit hours (PSVC) by the end of the tracking period and were seeking AA, AS and PSVC.

Number Graduated: Of the cohort, the number who graduated.

Number Enrolled in Good Academic Standing: Of the cohort, excluding the Number Graduated, the number of students still enrolled at the institution during the following terms with a GPA at or above 2.0.

Number Enrolled Not in Good Academic Standing: Of the cohort, excluding the Number Graduated, the number of students still enrolled at the institution during the terms, with a GPA below 2.0.

Number who Left in Good Academic Standing: Of the cohort, excluding the number Graduated, the number of students who were not enrolled at the institution during the terms, that had a GPA at or above 2.0.

Retention Rate = (# Graduated + Enrolled in good Standing + #Enrolled Not in Good Standing) / Total Cohort

Success Rate = (# Graduated + Enrolled in Good Standing + #Left in Good Standing) / Total Cohort

ANALYSIS OF EACH MEASURE

1. **Measure 1, Part 1 - Prior Year High School Graduates Enrolled the Following Year Enrollment Report**

- Gulf Coast Community College enrolled 51.03% of the prior year high school graduates in its service district. This percentage is consistent with the numbers enrolled in previous years. For the sixth consecutive year GCCC exceeds Florida system-wide percentages significantly (Figure 1, page 8).

2. **Measure 1, Part 2 - Retention and Success Report for Associate in Arts, Associate in Science, and Postsecondary Vocational Certificate Students.**

- **Associate in Arts students:** Gulf Coast Community College attained a 80.25% retention rate and a 98.12% success rate for associate in arts students in the current reporting period. The retention rate improved 6.43% compared to previous year. The five-year trend in retention and success rates indicates that the college consistently exceeds the Florida system-wide percentages (Figures 2 - 3, page 9).
- **Total Associate in Science students:** Gulf Coast Community College achieved a 78.72% retention rate for associate in science students and a 100% success rate. The success rate was at 100% for the sixth consecutive year. Both retention and success rates are significantly higher than the Florida system-wide percentages (Figures 4-5, page 10).
- **Total Postsecondary Vocational Certificate students:** Gulf Coast Community College achieved a 100% retention rate for the fifth consecutive year and a 100% success rate for the seventh consecutive year. These rates have been consistently higher than the Florida system-wide percentages (Figures 6-7, page 11).

3. **Measure 2 - Associate in Arts Degree Transfer Performance Report**

- The average GPA obtained by Gulf Coast Community College Associate in Arts transfer students in the State University System was 3.13; this average GPA is higher than the Florida system-wide average of 2.95. Additionally, 86.02% of AA transfer students achieved a GPA at or above 2.50. The results for this category improved 6.9% from last year, and they continue to exceed the Florida system-wide percentages as they have for the past seven years (Figures 8-9, page 12).

4. **Measure 3 Part 2: State Vocational Program Placement Report**

- Gulf Coast Community College Vocational Program completers achieved a 75.93% placement rate while leavers attained a 47.01% placement rate. As was the case last year, GCCC's placement rates for completers and leavers are well below the Florida system averages. This can likely be attributed to the current economic climate (Figures 10-11, page 13).

5. **Measure 4 Part 1 - College Preparatory Success Rate Report**

- **FTIC Students Failed Any Entry-Level Test:** Of Gulf Coast Community College's FTIC students, 62.12% placed in college preparatory studies. This is 1.83% lower than last year, and 2.69% lower than the Florida system-wide percentages (Figure 12, page 14).
- **Percent Passed Highest level for College Preparatory Reading:** Gulf Coast Community College achieved a passing rate of 66.81% for College Prep Reading classes, a percentage that is 12.48% higher than that of last year, but 6.14% lower than the Florida system-wide percentage (Figure 13, page 14).
- **Percent Passed Highest Level for College Preparatory Writing:** for the third consecutive year Gulf Coast Community College improved their College Prep Writing scores, the passing rate of 65.52% is 22.56% higher than last year. However, this is still 1.84% lower than the Florida system-wide percentage (Figure 14, page 15).
- **Percent Passed Highest Level for College Preparatory Math:** Gulf Coast Community College achieved a passing rate of 39.95%, an improvement of 3.09% compared to previous year. The college's average is 15.38% lower than the Florida system-wide percentage (Figure 15, page 15).

6. **Measure 4 Part 2 - College Preparatory Retention and Success Report for Associate in Arts, Associate in Science, and Postsecondary Vocational Certificate Students**

- **Total Associate in Arts students:** Gulf Coast Community College's retention rate for AA students (77.97%) showed a 2.68% improvement over last year and was 8.43% higher than the Florida system-wide percentage. The college's success rate (98.31%) exceeded the Florida system-wide percentage by 12.89% (Figures 16 – 17, page 16).
- **Total Associate in Science students:** Gulf Coast Community College's retention rate for AS/AAS students (73.91%) showed a 20.21% decrease compared to last year. This retention rate is 9.97% higher than the Florida system-wide rate of 63.94%. The success rate is at 100% for the seventh consecutive year and remains around 15% higher than the Florida system-wide percentage (Figures 18-19, page 17).
- **Total Postsecondary Vocational Certificate students:** Both the retention and success rates for Postsecondary Vocational Certificate students were 100%. (Figures 20-21, page 18).

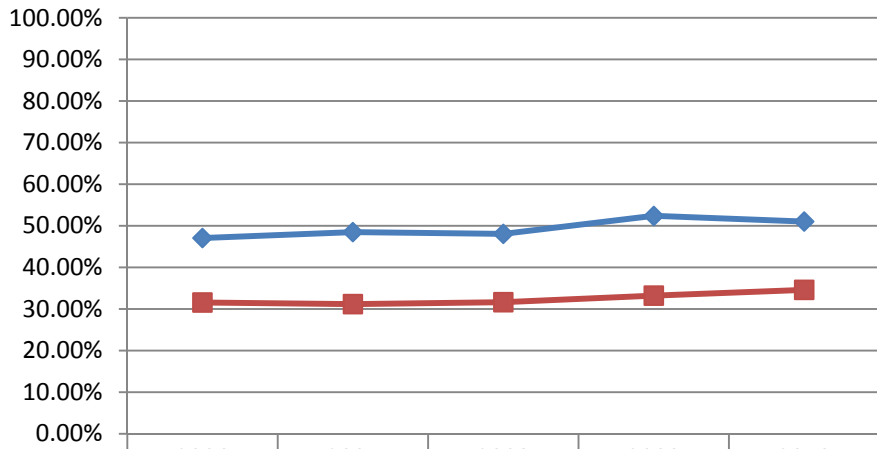
7. **Measure 5 - CLAST Performance Report**

- Results include students who attempted the CLAST or had a CLAST alternative. The performance of Gulf Coast Community College in passing each of the four subtests and all four subtests combined was similar to the Florida system-wide percentages. The passing rate for individual subtests ranged from 98.77% to 100% and for all four tests combined was 98.40%, which was slightly higher than the Florida system-wide percentage of 97.00% (Figures 22 – 26, pages 19-21).

CONCLUSION

Gulf Coast Community College continues its positive results on the accountability measures as established by the State of Florida. Retention rates increased dramatically over the past year. The excellent level of performance is also evidenced by consistently high GPAs and non-college preparatory success rates that are higher than the Florida system averages in most areas measured. One critical area of needed improvement is evidenced by lower scores in the college preparatory area. Even though all of the college preparatory areas improved, they are still below the Florida system-wide percentages.

**Accountability Outcome Measure 1 Part 1
Comparison of Prior Year High School Enrolled the
Following Year between
GCCC and Florida System Enrollment Report**



	2006	2007	2008	2009	2010
◆ GCCC	47.07%	48.49%	48.07%	52.39%	51.03%
■ Florida System	31.55%	31.17%	31.64%	33.20%	34.59%

Figure 1

**Accountability Outcome Measure 1 Part 2
Comparison of Retention Rate Report for Total
AA Students between GCCC and Florida System**

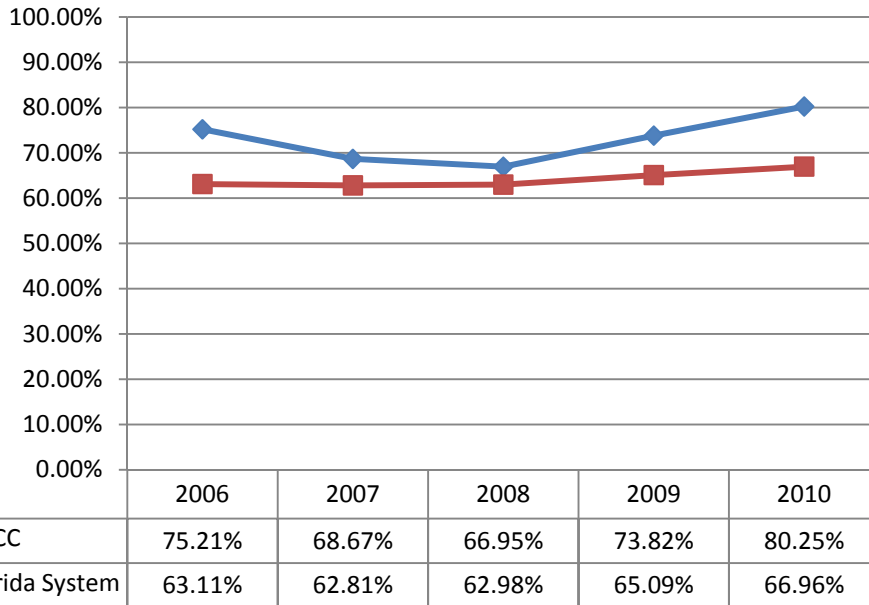


Figure 2

**Accountability Outcome Measure 1 Part 2
Comparison of Success Rate Report for Total
AA Students between GCCC and Florida System**

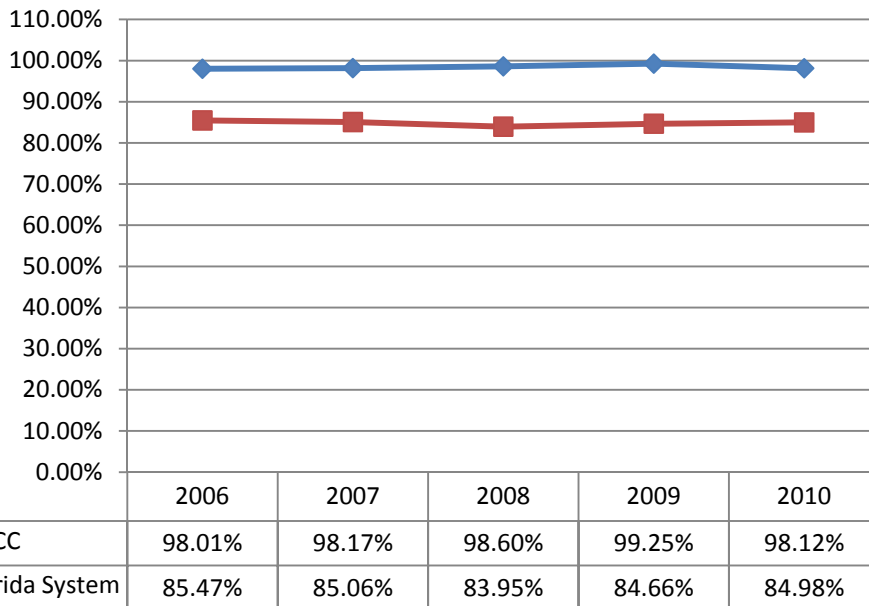
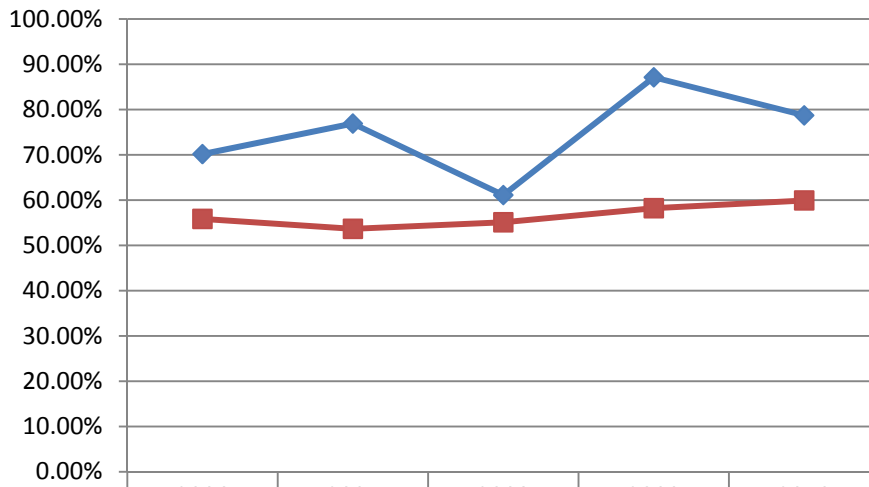


Figure 3

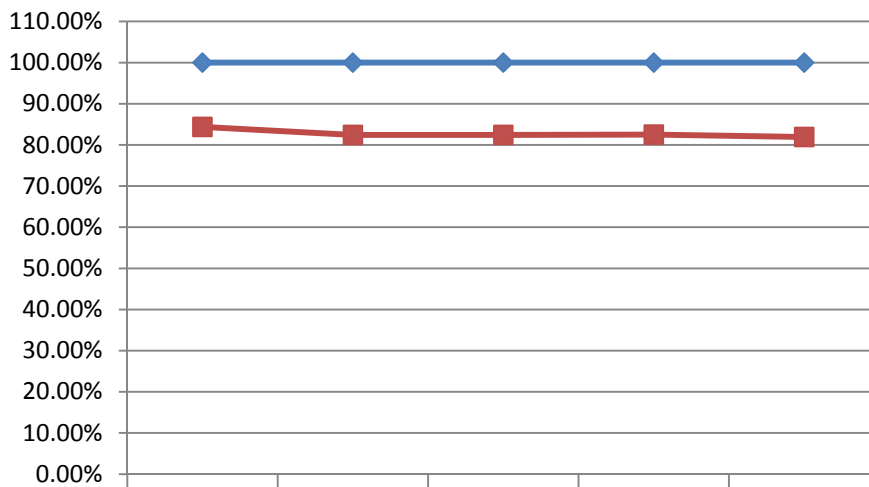
**Accountability Outcome Measure 1 Part 2
Comparison of Retention Rate Report for Total
AS/AAS Students Between GCCC and Florida System**



	2006	2007	2008	2009	2010
◆ GCCC	70.18%	76.92%	61.11%	87.14%	78.72%
■ Florida System	55.86%	53.66%	55.10%	58.22%	59.93%

Figure 4

**Accountability Outcome Measure 1 Part 2
Comparison of Success Rate Report for Total
AS/AAS Students between GCCC and Florida System**



	2006	2007	2008	2009	2010
◆ GCCC	100.00%	100.00%	100.00%	100.00%	100.00%
■ Florida System	84.37%	82.44%	82.42%	82.50%	81.91%

Figure 5

**Accountability Outcome Measure 1 Part 2
Comparison of Retention Rate Report for Total
PSVC Students between GCCC and Florida System**

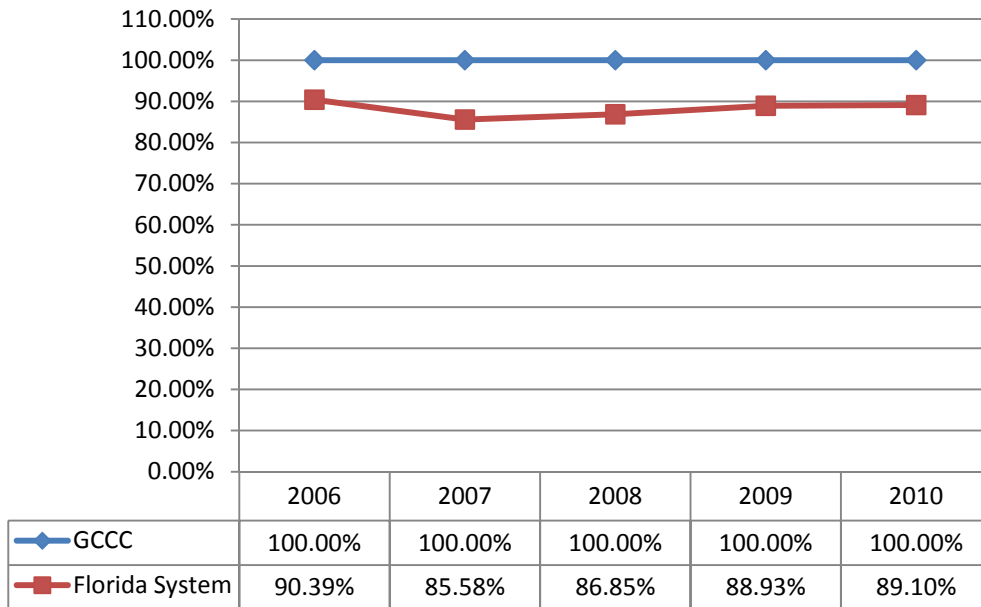


Figure 6

**Accountability Outcome Measure 1 Part 2
Comparison of Success Rate Report for Total
PSVC Students between GCCC and Florida System**

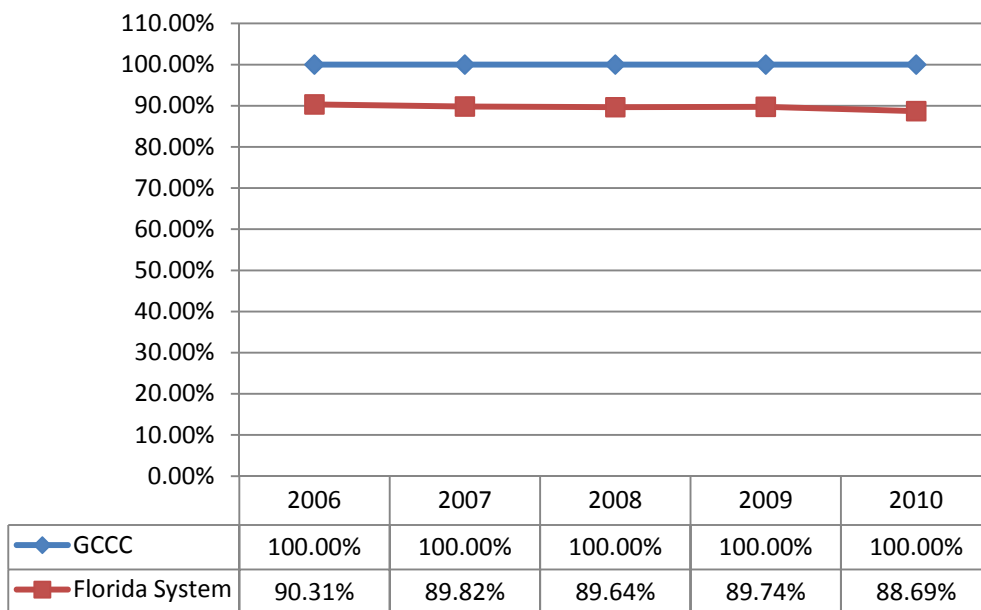


Figure 7

**Accountability Outcome Measure 2
Comparison of AA Degree Transfer Performance for
Mean GPA
between GCCC and Florida System**

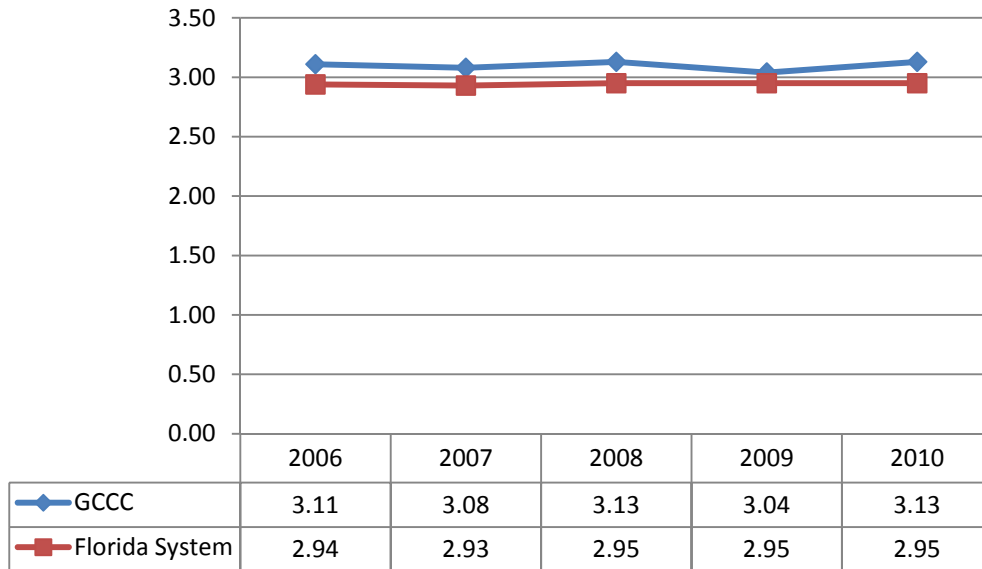


Figure 8

**Accountability Outcome Measure 2
Comparison of AA Degree Transfer Performance for
Percent
with GPAs at or above 2.5
between GCCC and Florida System**

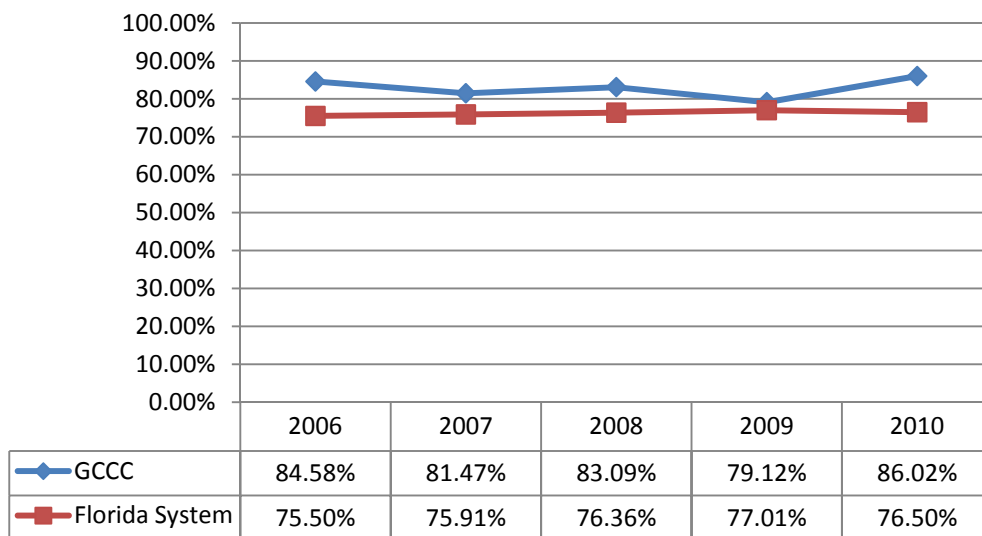


Figure 9

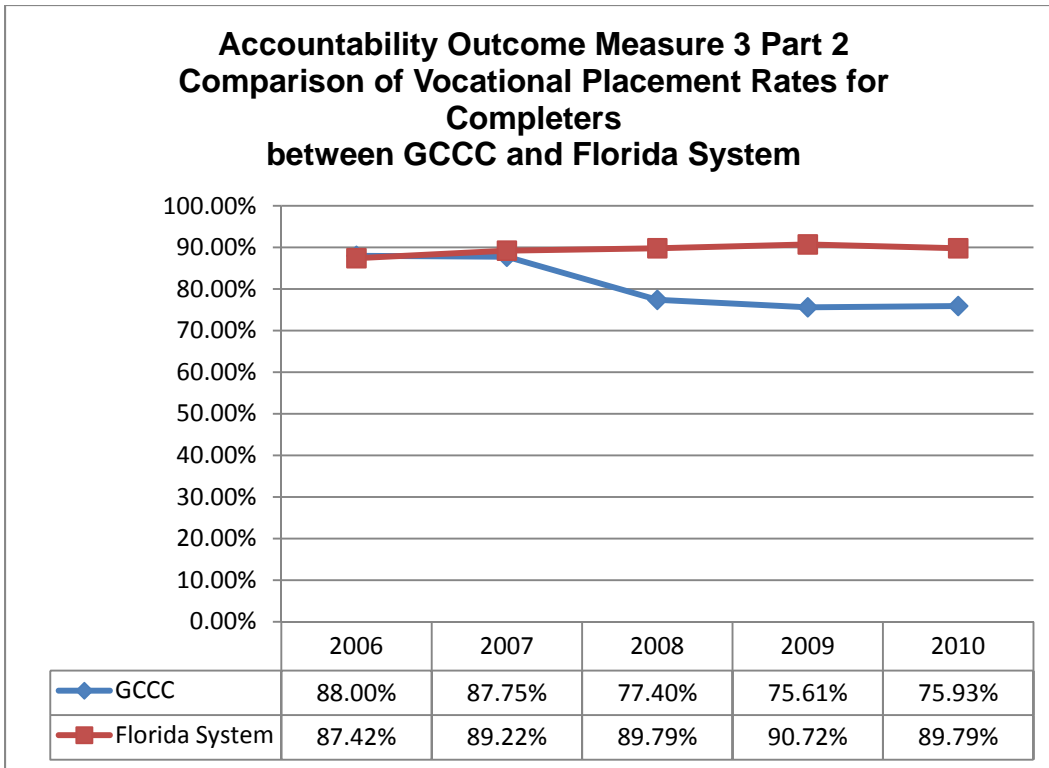


Figure 10

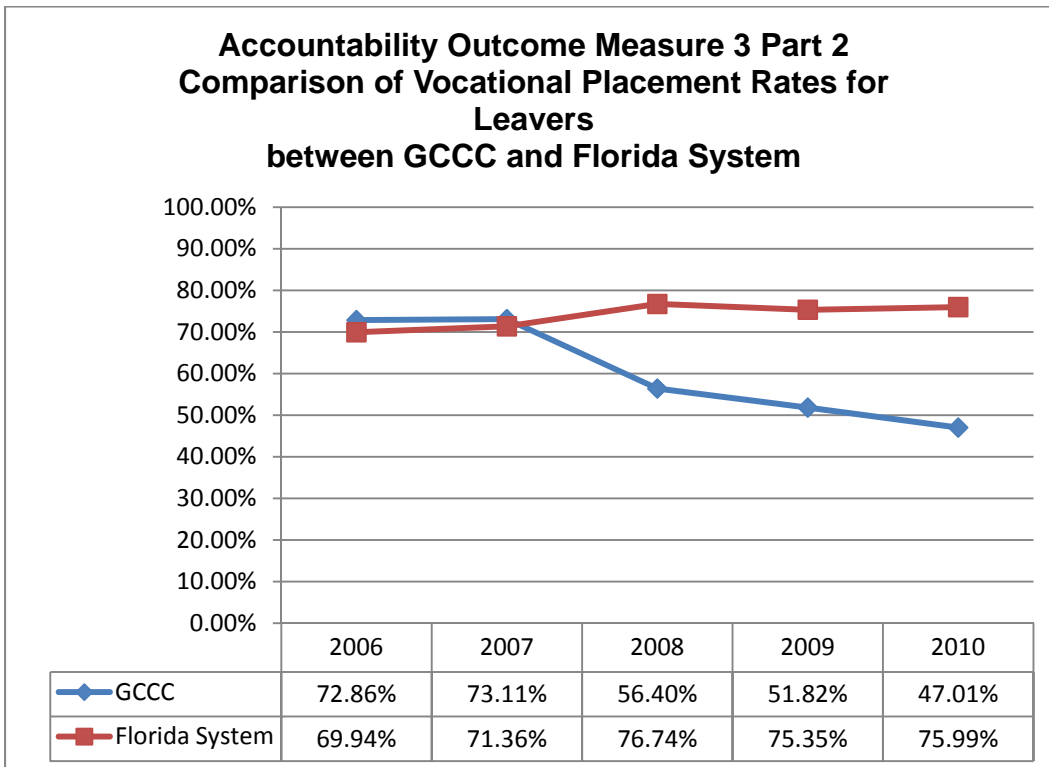


Figure 11

**Accountability Outcome Measure 4 Part 1
Comparison of FTIC Students Failed Any Entry-Level
Test
between GCCC and Florida System**

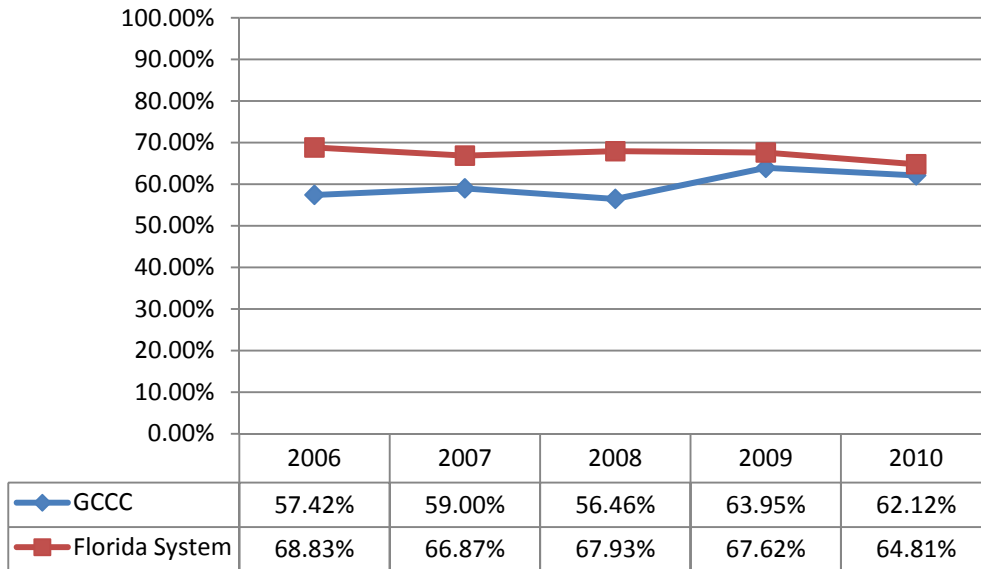


Figure 12

**Accountability Outcome Measure 4 Part 1
Comparison of Percent Passed Highest Level for
College Prep Reading
between GCCC and Florida System**

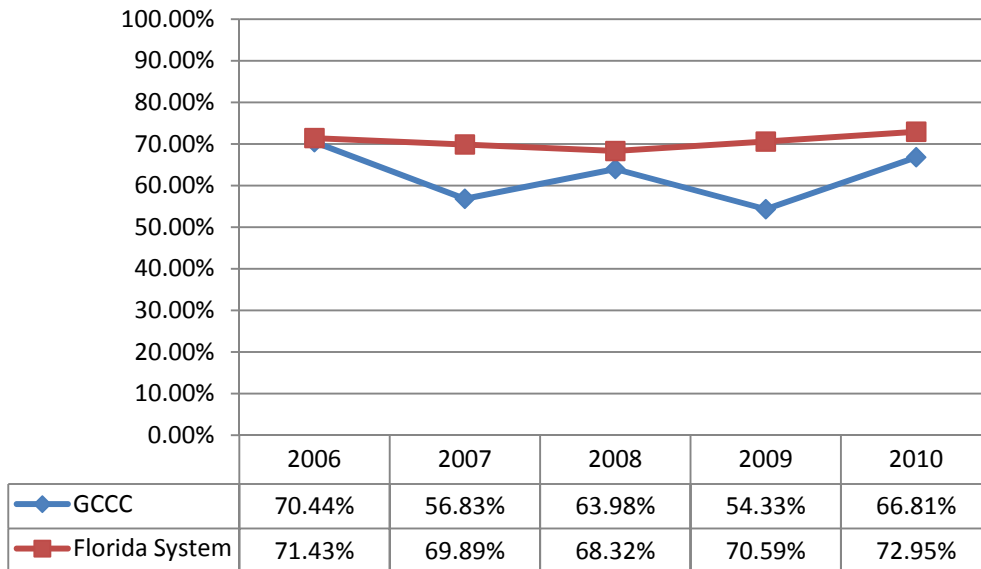


Figure 13

**Accountability Outcome Measure 4 Part 1
Comparison of Percent Passed Highest Level for
College Prep Writing
between GCCC and Florida System**

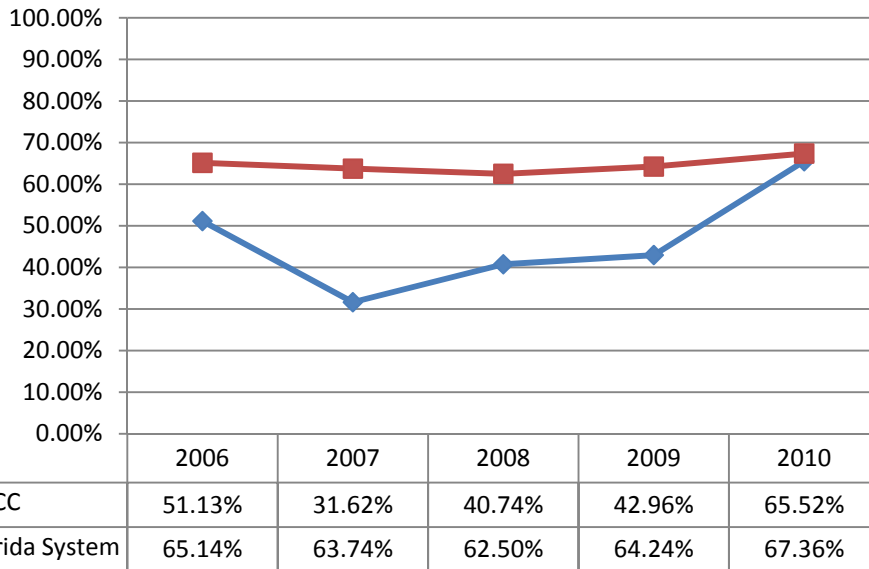


Figure 14

**Accountability Outcome Measure 4 Part 1
Comparison of Percent Passed Highest Level of
College Prep Math
between GCCC and Florida System**

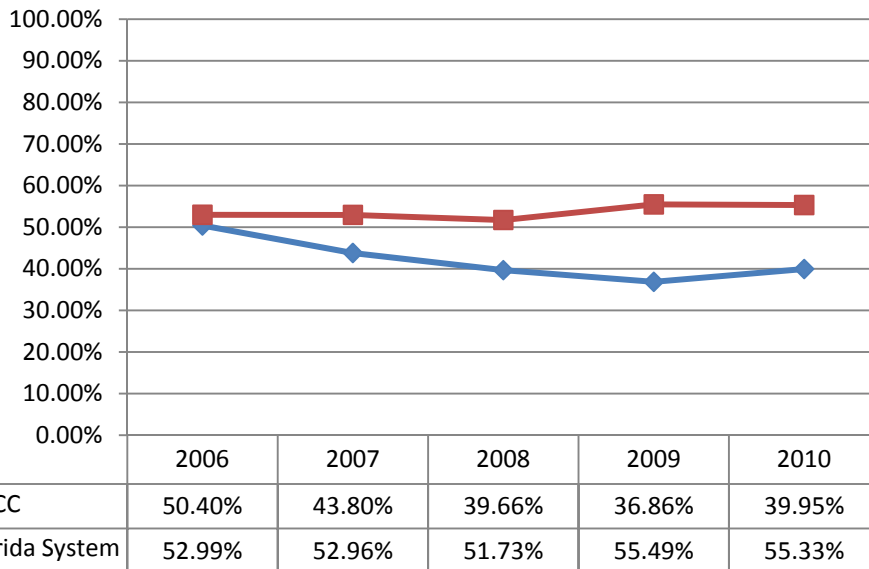


Figure 15

**Accountability Outcome Measure 4 Part 2
Comparison of College Prep Retention Rate Report for
AA Students
between GCCC and Florida System**

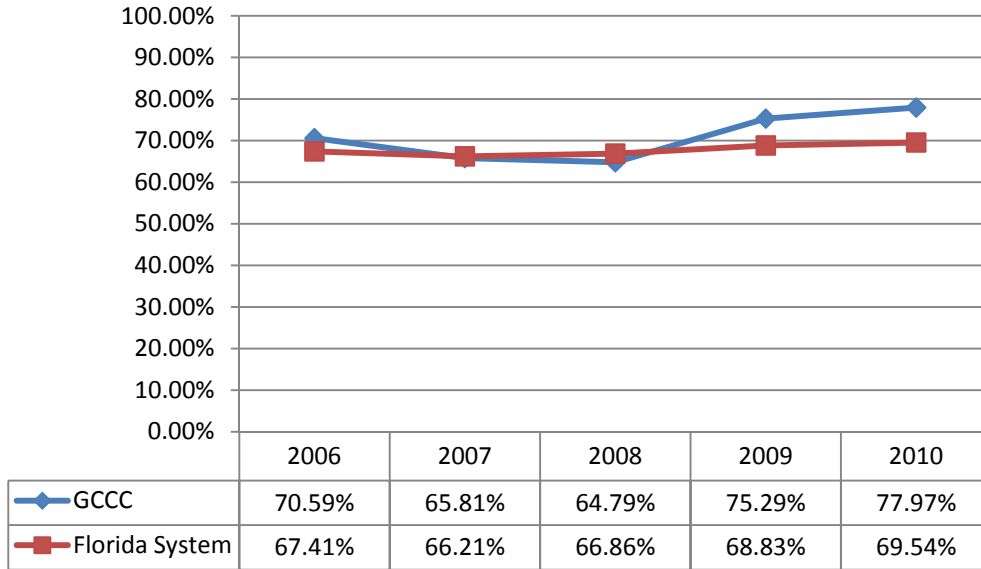


Figure 16

**Accountability Outcome Measure 4 Part 2
Comparison of College Prep Success Rate Report for
AA Students
between GCCC and Florida System**

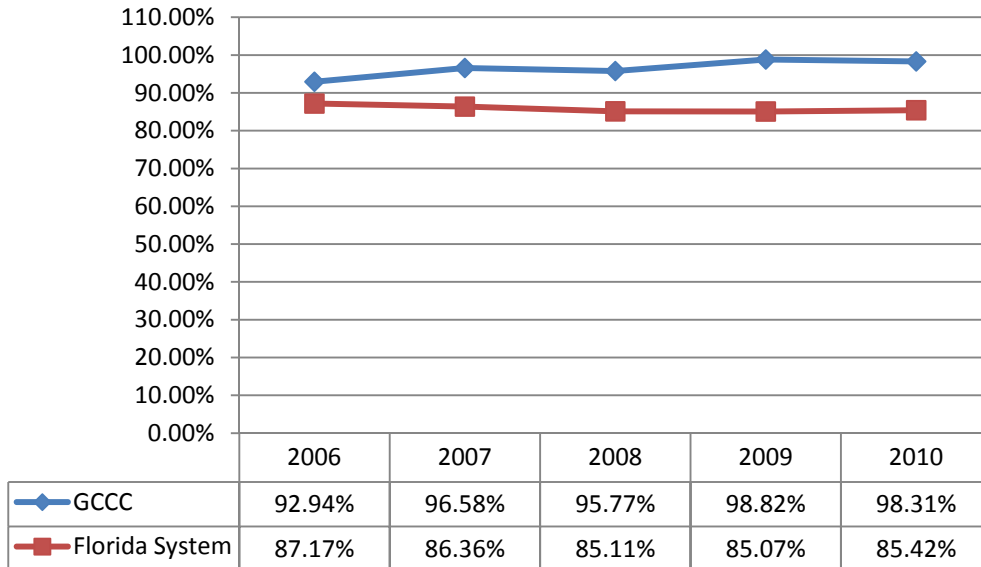


Figure 17

**Accountability Outcome Measure 4 Part 2
Comparison of College Prep Retention Rate Report for
AS/AAS Students
between GCCC and Florida System**

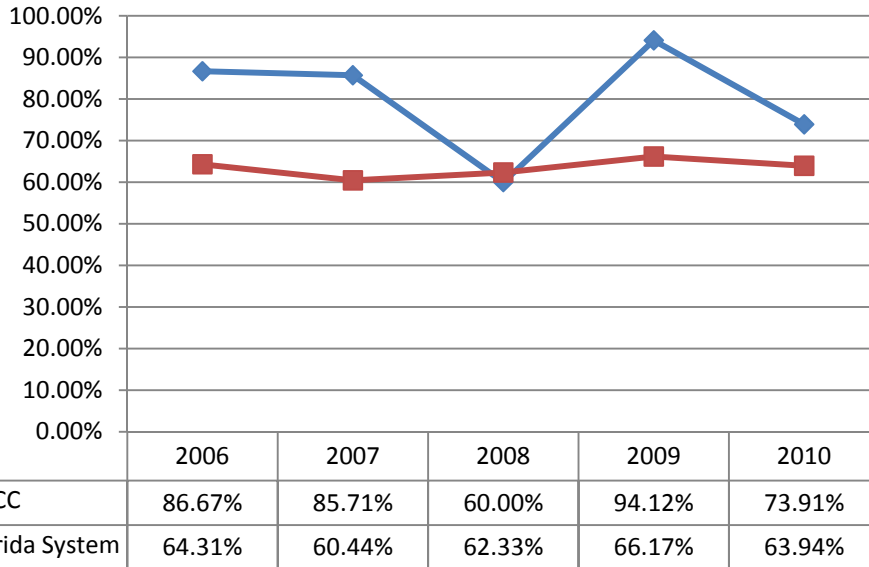


Figure 18

**Accountability Outcome Measure 4 Part 2
Comparison of College Prep Success Rate Report for
AS/AAS Students
between GCCC and Florida System**

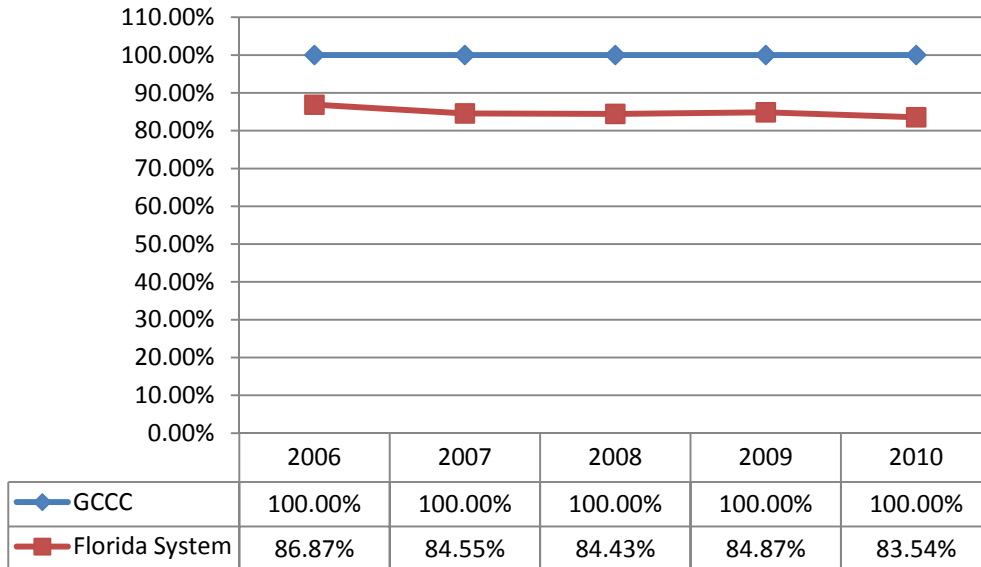


Figure 19

**Accountability Outcome Measure 4 Part 2
Comparison of College Prep Retention Rate Report for
PSVC Students
between GCCC and Florida System**

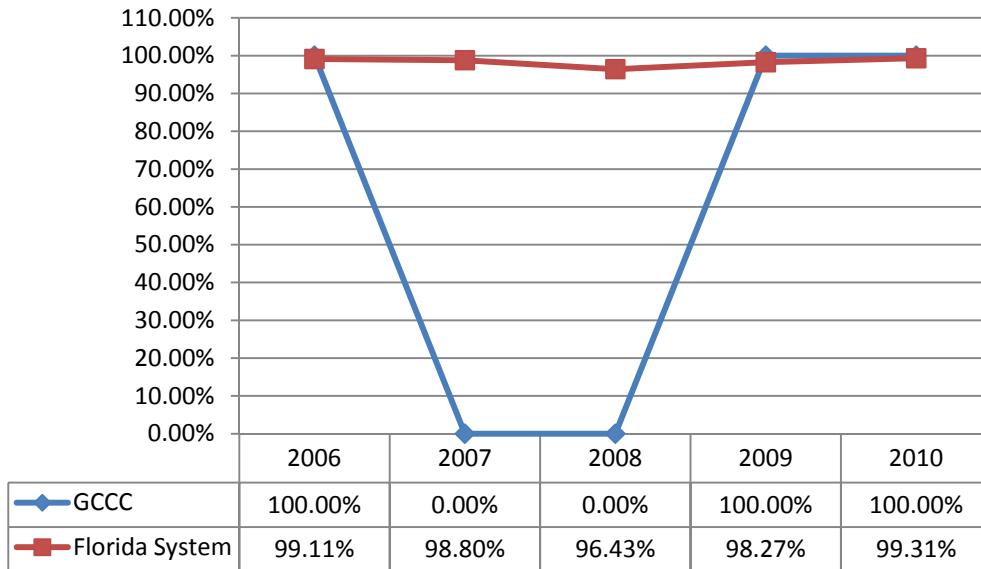


Figure 20

**Accountability Outcome Measure 4 Part 2
Comparison of College Prep Success Rate Report for
PSVC Students
between GCCC and Florida System**

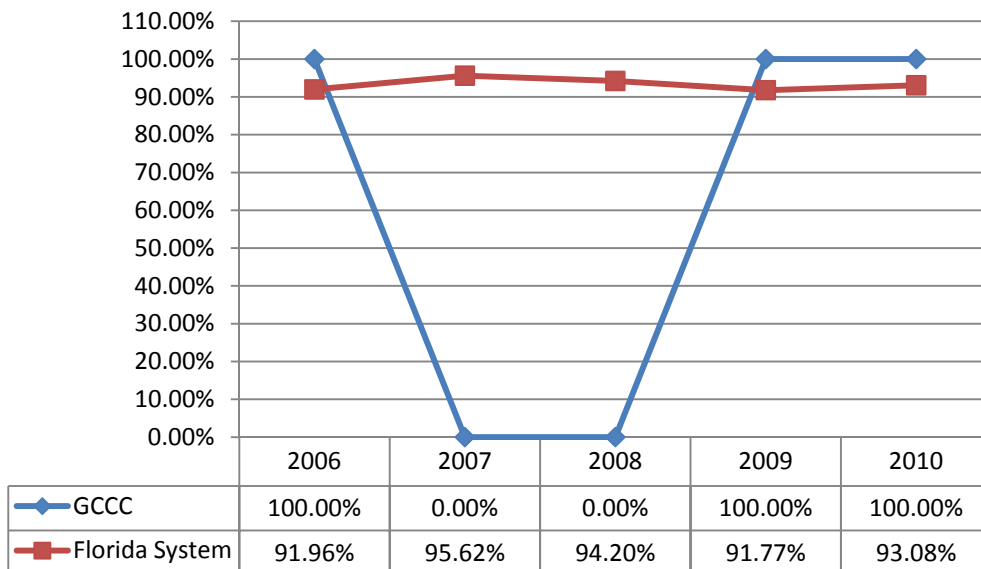


Figure 21

**Accountability Outcome Measure 5
Comparison of CLAST Performance Report for Essay
Subtest
between GCCC and Florida System**

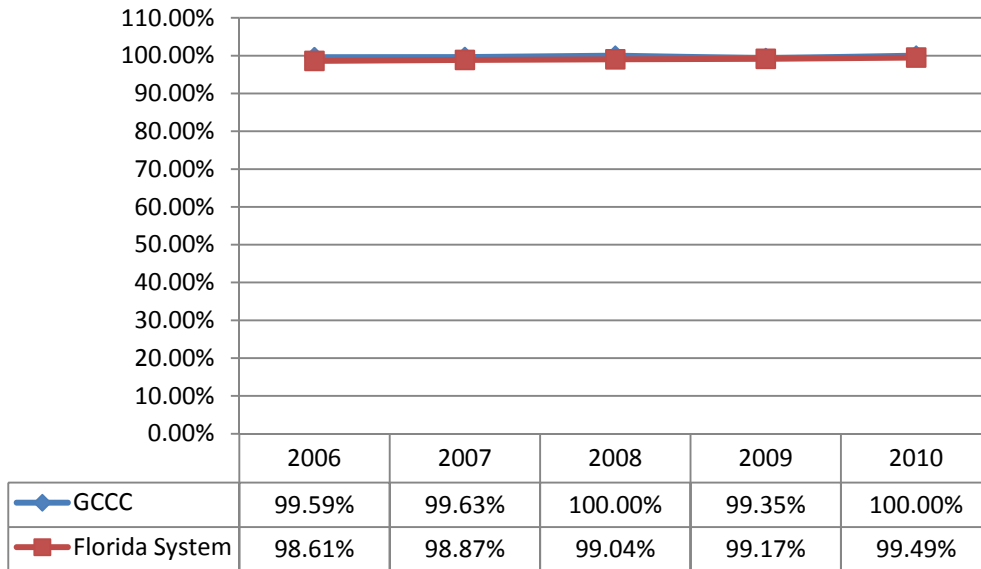


Figure 22

**Accountability Outcome Measure 5
Comparison of CLAST Performance Report for Math
Subtest
between GCCC and Florida System**

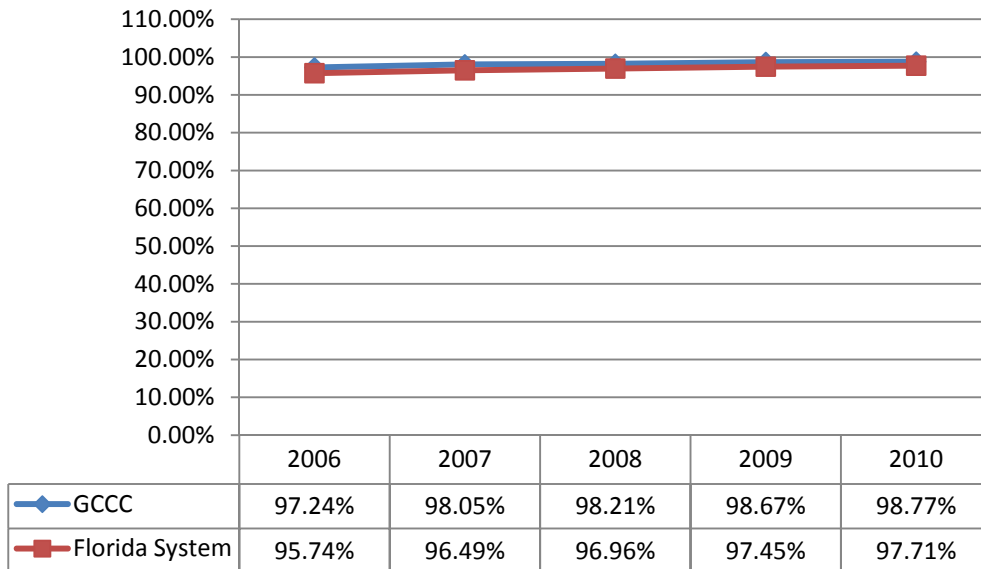


Figure 23

**Accountability Outcome Measure 5
Comparison of CLAST Performance Report for
Reading Subtest
between GCCC and Florida System**

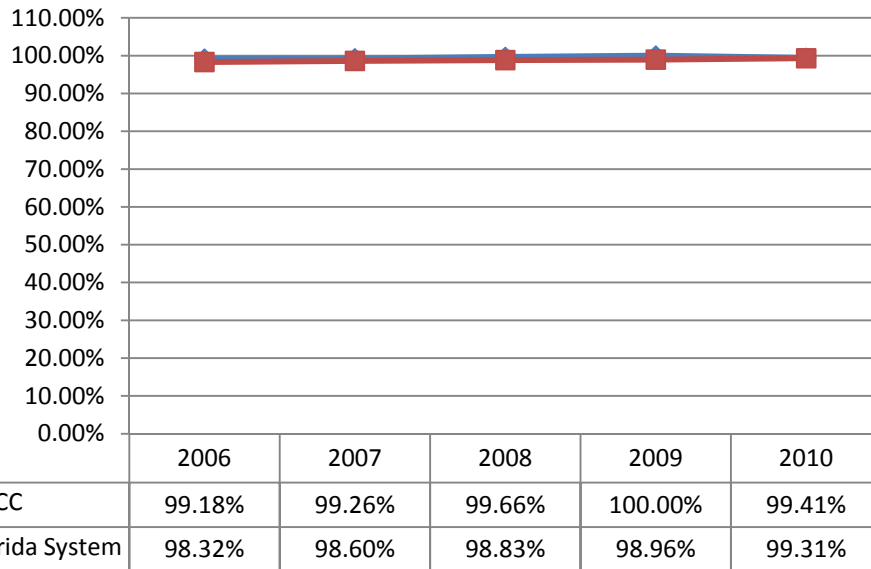


Figure 24

**Accountability Outcome Measure 5
Comparison of CLAST Performance Report for
Language Subtest
between GCCC and Florida System**

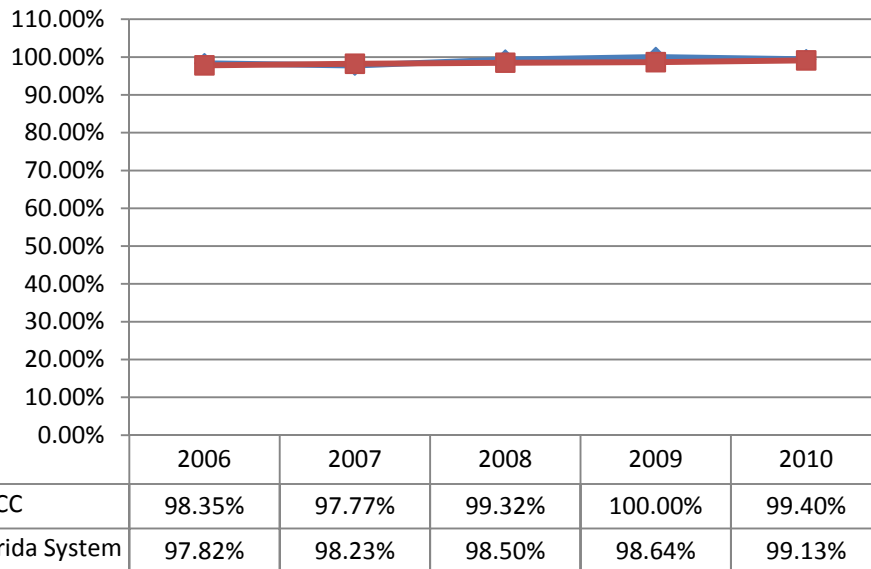
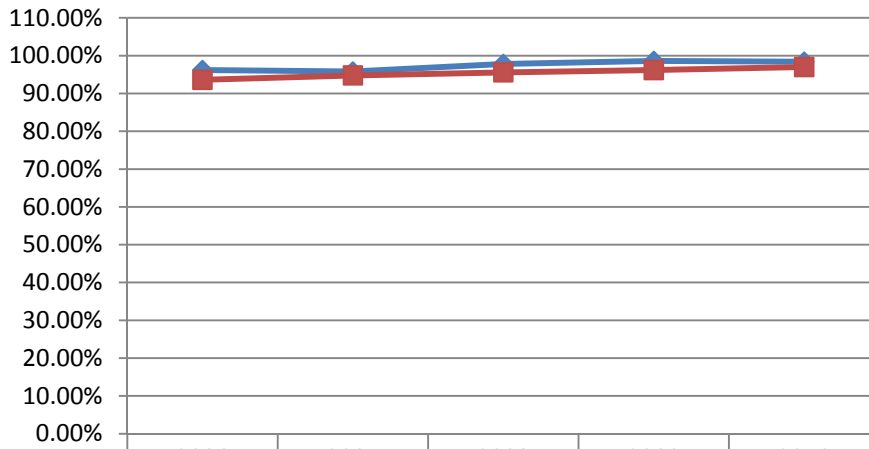


Figure 25

**Accountability Outcome Measure 5
Comparison of CLAST Performance Report for all
Subtest
between GCCC and Florida System**



	2006	2007	2008	2009	2010
—◆— GCCC	96.19%	95.80%	97.81%	98.62%	98.40%
—■— Florida System	93.62%	94.78%	95.58%	96.21%	97.00%

Figure 26