



HOW TO CONNECT TO THE GCSC WIRELESS NETWORK (MAC VERSION)

These instructions assume that you have already filled out a Wireless Access Request form and had your picture ID checked by a member of the library staff. If you have not yet done this, please do so before proceeding any further. Your username and password will be emailed to the email address which you provide with your access request form. Wireless access points are currently located in the library, and the Student Union East cafeteria area.

This document demonstrates the use of OS X's built-in wireless software. Your software may vary slightly in set-up. Your wireless card must support WPA encryption.

STEP 1: Activate your wireless device. Choose System Preferences from the main Apple pull-down tab, and from that, choose Network under the Internet & Network section.



Figure 1

STEP 2: Under Network's Airport tab, create a new location for GCSC's library by pulling down the location bar and choosing "New Location". When this location is named, make sure it is selected (identified by a checkmark next to it). Click the "+" button beneath the listed Network Name/Security section.

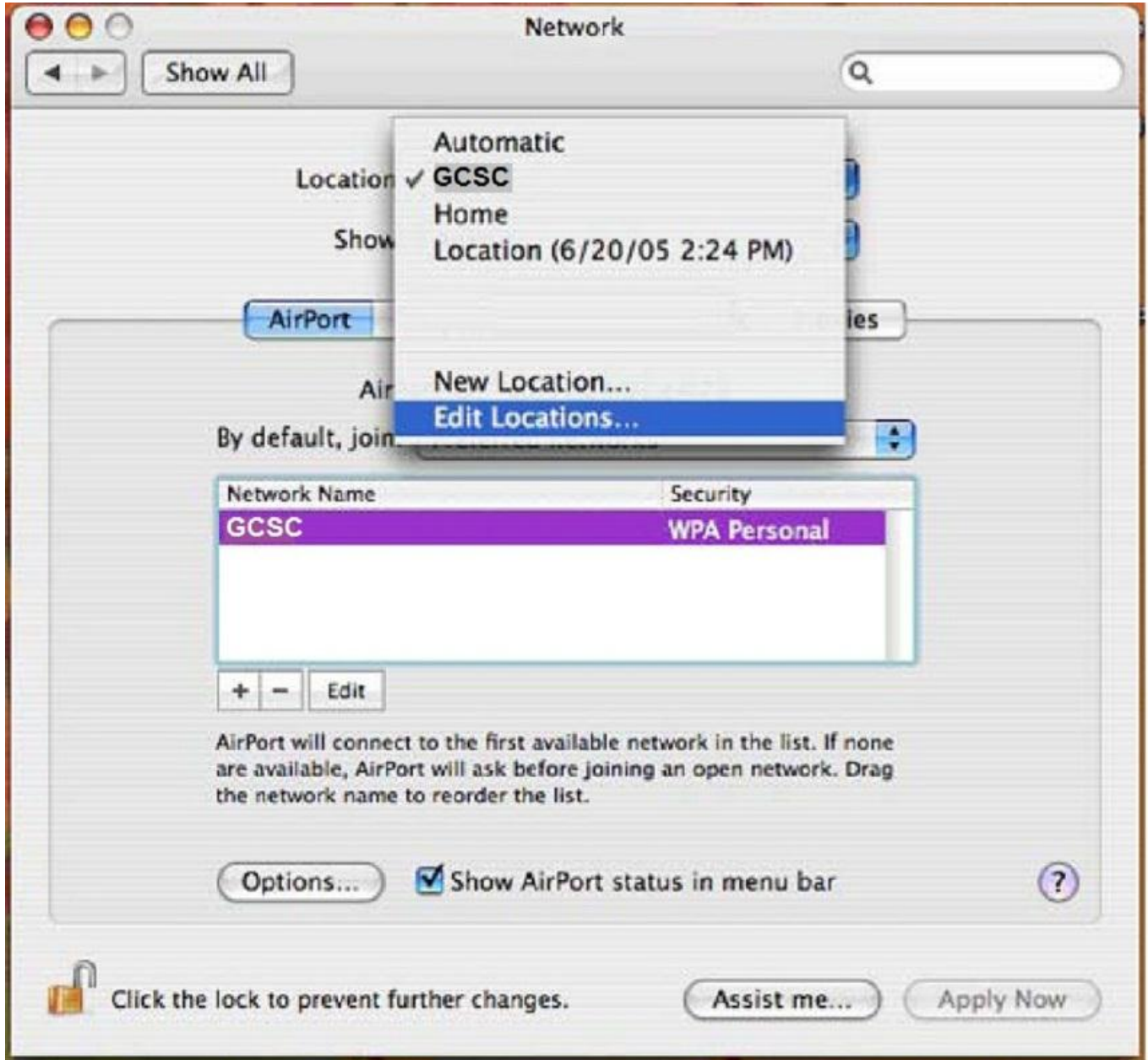
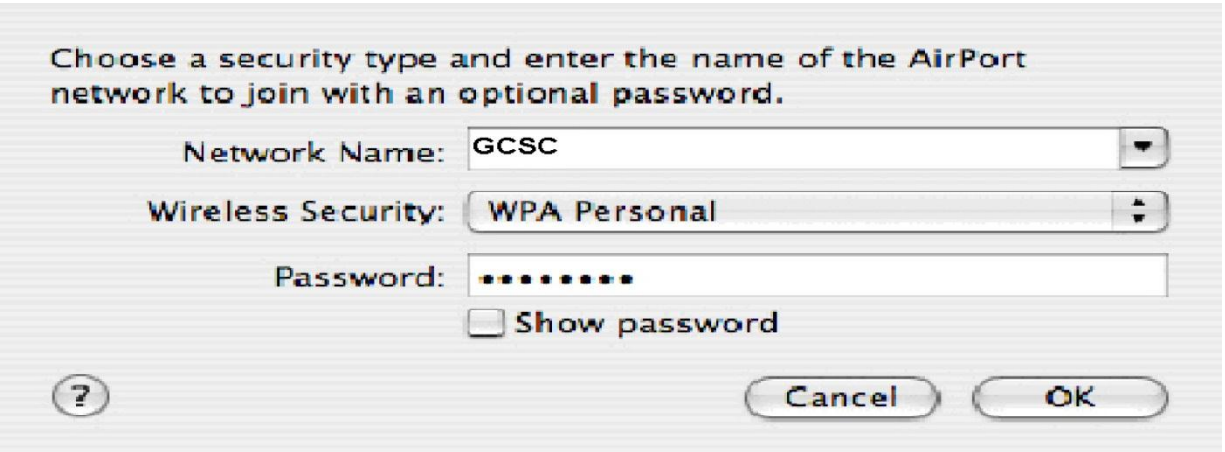


Figure 2



STEP 3: Enter **GCSC** as the Network Name, choose “WPA Personal” as the method of Wireless Security, and enter the password **gcscgcsc** in the password box. Click OK when you have done this. Click “Apply Now” on the network box after you have done this.



STEP 4: Click the Proxies tab in your network setup. Configure ALL of the proxies to use the proxy server **150.176.193.141** and put **8000** in the port box. Click Apply Now when you have done this for each one.



NOTE: Don't forget, you will need to change your location in your Network setup when you access a network other than Gulf Coast's.

STEP 5: Open your web browser, navigate to any page using your web browser. The first time you do this, you will get a message asking for your username and password. Enter the username and password you were assigned when you signed up for wireless access, and click the OK button.

To view this page, you need to log in to the http proxy server 150.176.193.141:8000.
Your password will be sent in the clear.

Name:

Password:

Remember this password in my keychain

Cancel Log In

NOTE: If you are using a web browser other than Safari (such as Firefox) you will need to enter the proxy information from Step 4 in that browser's proxy setup in the software's Internet options.

You should now have full web access. Please note, you should never share your username or password with anyone or allow anyone to use your connection – you are responsible for anything done using your account..

Applications may be obtained at the library circulation desk during normal business hours.

If you have any questions regarding the usage or setup of your account, please call 769-1551, extension 4873 between 8 AM and 4 PM Monday-Friday, excluding holidays.